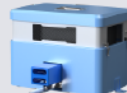
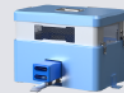
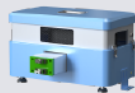
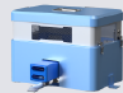


## Charging Piles Parameter

- Standard
- Optional
- None



## Forklift Handles Parameter

- Standard
- Optional
- None



Product model	SLEXC-24100-00	SCS-1500	SCS-1502	SCS-2001	SCS-2500	SCS-3501	Product model	SFL-Handle
L*W*H (mm)	500*420*800	450*450*384	450*450*384	466*417*298.5	466*417*298.5	455*320*400 (Charging pile)+ 335*200*380 (Charging head)	Product name	Forklift handle
Charging head projecting length (mm)	150	150	150	137	137	85	L*W*H (mm)	160*110*86
Charging head projecting height (mm)	350/500	116-137	116-137	20-30	20-30	300	Weight (kg)	1.5-2
AC input voltage (VAC)	220±10%	220	220	220	220	220	Rated voltage (V)	DC24±10%
Input frequency (Hz)	50	50-60	50-60	50-60	50-60	50-60	Rated current (mA)	500
DC output voltage(VDC)	24	48	48	48	48	48		
Maximum output voltage(V)	24	54.6±0.2	54.6±0.2	54.6±0.2	54.6±0.2	54.6±0.2		
DC output current(ADC)	100	15	15	20	25	30		
Maximum output current(A)	100	15±5%	15±5%	20±5%	25±5%	30±5%		
Maximum output power(W)	3000	900	900	1200	1500	1800		
Running noise(dB)	≤55	≤50	≤50	≤50	≤50	≤55		
Weight(kg)	43.5	18	18	19	20	37		
Installation method	Ground reinforcement	Ground reinforcement	Ground reinforcement	Ground reinforcement	Ground reinforcement	Ground reinforcement		
Cooling method	Air-cooled	Air-cooled	Air-cooled	Air-cooled	Air-cooled	Air-cooled		
Socket specifications	Type C 16A	Type C 10A	Type C 10A	Type C 10A	Type C 10A	Type C 16A		
Applicable model	For automatic forklift	For AMB & AMB-J series	For SFL-MP10S	For AMB-300J & AMB-600J	For AMB-300 & AMB-500	For SPK series		